

## BRENTWOOD

**06-9504AS / 06-9504BRN**

TUB & SHOWER FAUCET

**06-9504BRNT**

TUB & SHOWER TRIM SET

**06-9504BRNTSO**

SHOWER ONLY TRIM SET



AGED BRONZE

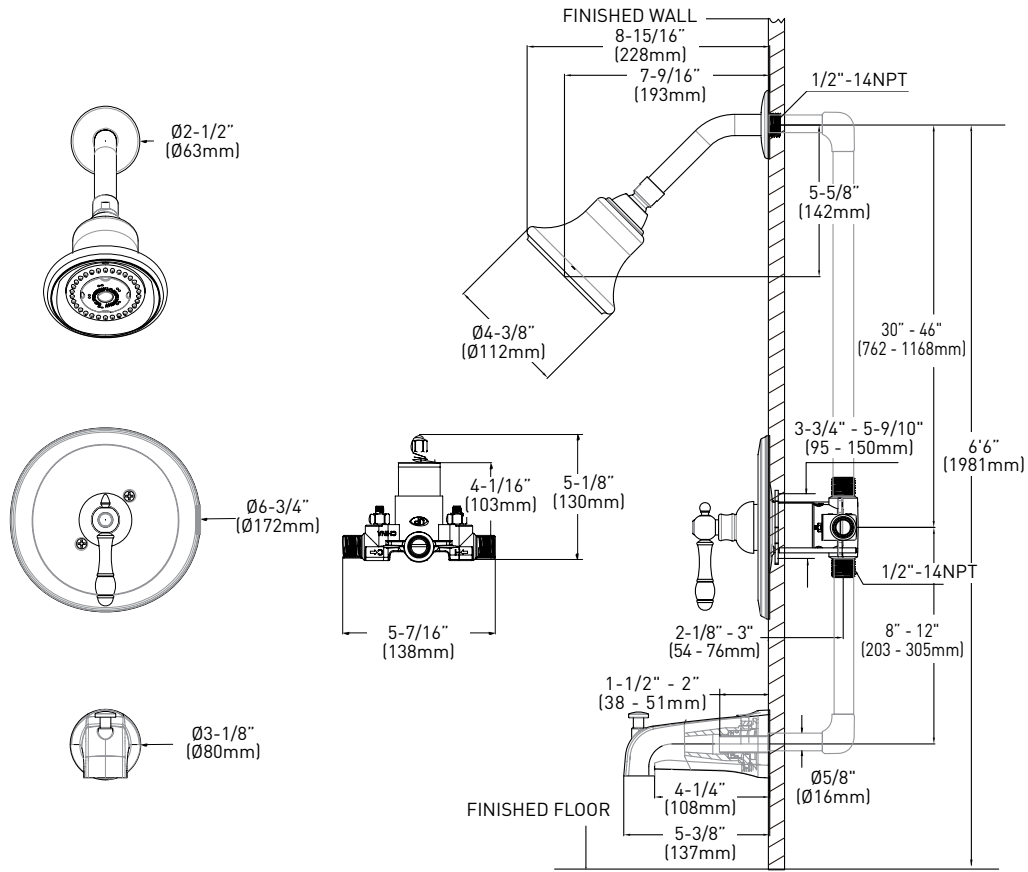


POLISHED CHROME

### FEATURES

- PRESSURE BALANCED SINGLE LEVER HANDLE AND SINGLE SETTING, ANTI-CLOG SHOWER HEAD
  - AVAILABLE IN POLISHED CHROME AND AGED BRONZE
  - CERAMIC CARTRIDGE
  - SHOWER HEAD MAXIMUM FLOW RATE: 2.0 GPM/ 7.6 LPM @ 80 PSI
  - TUB SPOUT MINIMUM FLOW RATE: 2.4 GPM/9.0 LPM @ 20 PSI
  - SLIP-FIT SPOUT
  - FACTORY PRESSURE TESTED
- cUPC CERTIFIED / WaterSense® CERTIFIED

CRITICAL DIMENSIONS NOT TO SCALE



**CONSTRUCTION**

- METAL CONSTRUCTION WITH VARIOUS FINISHES IDENTIFIED BY SUFFIX
- BRASS VALVE BODY

**VALVE**

- VALVES: 06-V0002, 06-0003, 06-V0004, 06-V0005, 06-V0006, 06-V0007, 06-V0008, 06-V0009
- ADJUSTABLE TEMPERATURE LIMIT STOP TO CONTROL MAXIMUM HOT WATER TEMPERATURE
- PRESSURE BALANCING MECHANISM MAINTAINS SELECTED DISCHARGE TEMPERATURE TO ± 2°
- BACK-TO-BACK INSTALLATION CAPABILITY

**OPERATION**

- LEVER STYLE HANDLE WITH TEMPERATURE INDICATOR ON THE ESCUTCHEON

**WATER-CONTROL MECHANISM**

- CARTRIDGE
  - ONE-PIECE, SELF-CONTAINED CERAMIC DISC VALVE
- FLOW**
- SHOWERHEAD IS LIMITED TO 2.0 GPM (7.6 L/MIN.)

**CODES/STANDARDS APPLICABLE**

- cUPC CERTIFIED
- ASME A112.18.1/CSA B125.1
- ASSE 1016

**GUARANTEE**

- LIMITED LIFETIME GUARANTEE AGAINST DEFECTS IN MATERIAL AND WORKMANSHIP TO ORIGINAL CONSUMER PURCHASER
- 5 YEAR WARRANTY IF USED IN INDUSTRIAL, COMMERCIAL AND BUSINESS INSTALLATIONS



DESCRIPTION	AGED BRONZE	POLISHED CHROME	CASE QTY.
PRESSURE BALANCED SINGLE LEVER HANDLE TUB & SHOWER FAUCET AND SINGLE SETTING SHOWER HEAD WITH ANTI-CLOG TIPS	TUB & SHOWER FAUCET 06-9504BRN	TUB & SHOWER FAUCET 06-9504AS	4
	1/2" COPPER/MALE NPT & INTEGRAL STOPS	1/2" COPPER/MALE NPT & INTEGRAL STOPS	
	TUB & SHOWER TRIM SET 06-9504BRNT	SHOWER ONLY TRIM SET 06-9504BRNTSO	

